



Applied Project:  
ULTRA TEAM 3

# Applied Project Overview

## Key questions were:

**Assess the East Tampa community's water resource with an emphasis on conservation and sustainability**  
How the water practices and policies affected community members of East Tampa?

How does the community view the state of the retention ponds?

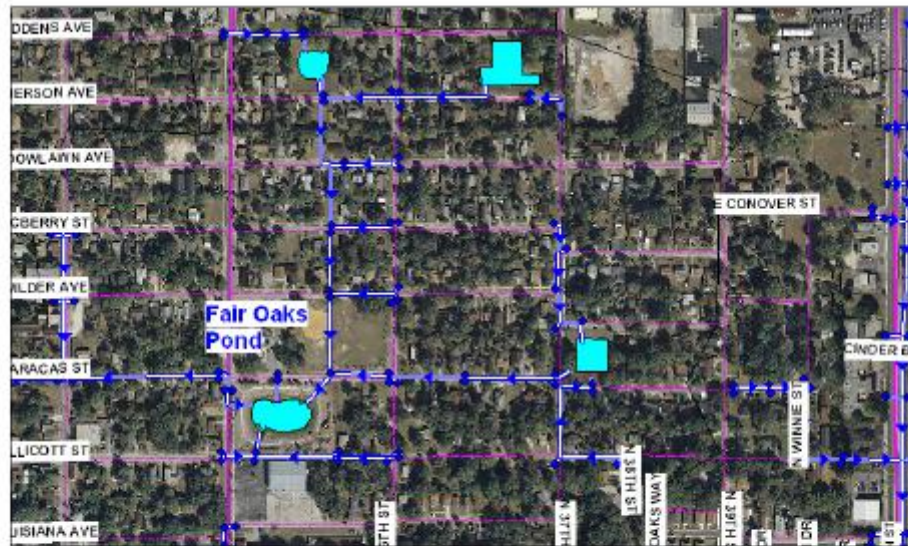
What improvements do the community members want to see done at the ponds we observed?

## Statistics From Team 3

- Number of Interviews Conducted: 20
- Total Number of Days Observed: 5
- Total Hours at Locations: 2 – 6 hrs. per park
- Average Hour Spent at Park: 3.5 hrs. per park

# Fair Oaks Park

City of Tampa Stormwater Ponds  
Fair Oaks Pond  
Contributing Area



# Observation

- The first part has a playground with good quality equipment, an older unkempt softball field, and a rec center.
- The second park across the street has a pond, a walking path around the pond, and a gazebo.
- The drainage was covered and blended into the surroundings, but looked to be working efficiently.
- Lots of young people were sharing a lunch up at the gazebo, and it seemed to be a neighborhood hot-spot with lots of people coming and going
- While there, the walking path saw at least two people walk around the pond to get exercise.

# Interview

The rec center workers: the softball fields were used weekly, a place to grill and eat would be a huge improvement.

Fishing Man: Mostly came for exercise, would not take his own kids to the park.

# 28<sup>th</sup> and Osborne



## Observations

- \* This park is currently under construction
- \* Heavy police presence patrolling the area surrounding the park
- \* A railroad runs along the far side of the area
- \* Students walking across the park

## Possible Improvements/ Uses:

- \* Park
- \* Nature Excursion
- \* A walking path that the students can use
- \* Larger area for cars to park



## 22nd / Osborne Pond September 2010





# Robert Cole Sr. Lake

- Gazebos For Shaded Areas
- Maintenance of Water Fountains
- Monthly Cleaning of Retention Pond



# Young Middle School Pond



- Several species of animals present
- Healthy, diverse, well-kept plants
- Attractive, well-used gazebos
- Eco-friendly roofs
- Multi-sided panel describes wildlife and pond efforts
- Oxygen sources in water
- Aesthetically pleasing brick pathway
- Fitness station
- Widely used by public

“[basketball court or snack-bar] *would be cool*”.  
-Middle School student

“... *we like the breeze* [of the gazebos]” –Group of women eating lunch in gazebos

“...*a playground could be dangerous...* [due to parents leaving kids unattended]... *by the water's edge.*”  
–Man walking pond perimeter with two children and wife



- Murky water, < than other sites
- Handful of litter along outskirts, < than other sites

# Ragan Park

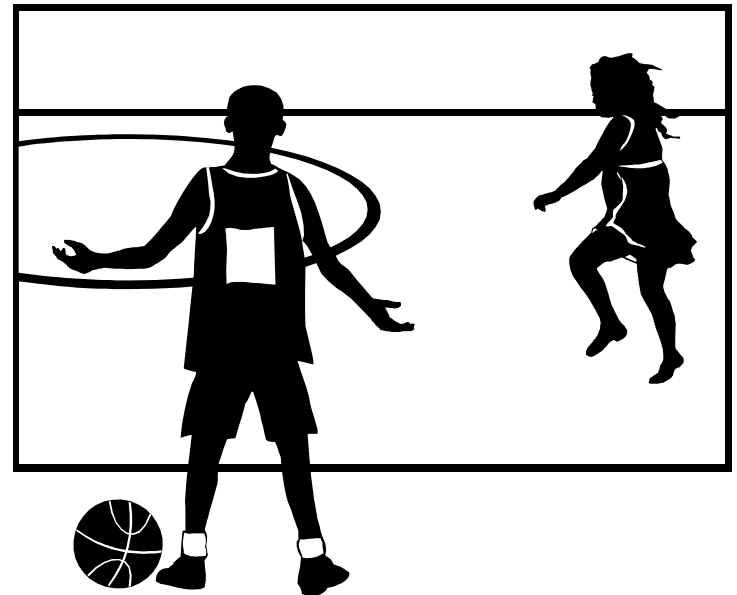
## Observations:

- \* Young children frequently used the playground
- \* Community members relax under the gazebo and under the trees in the park
- \* Pond contained litter and other forms of contaminants
  - \* Broken Glass Bottles
  - \* Papers
  - \* Plastic Bags
- \* Pond Hosted Variety of Animal Life
  - \* Herons
  - \* Ducks
  - \* Mallards
  - \* Turtles
  - \* Snakes
- \* “The Wall”
  - \* Located at back corner of park, opposite from pond
  - \* Area used for drug and alcohol use

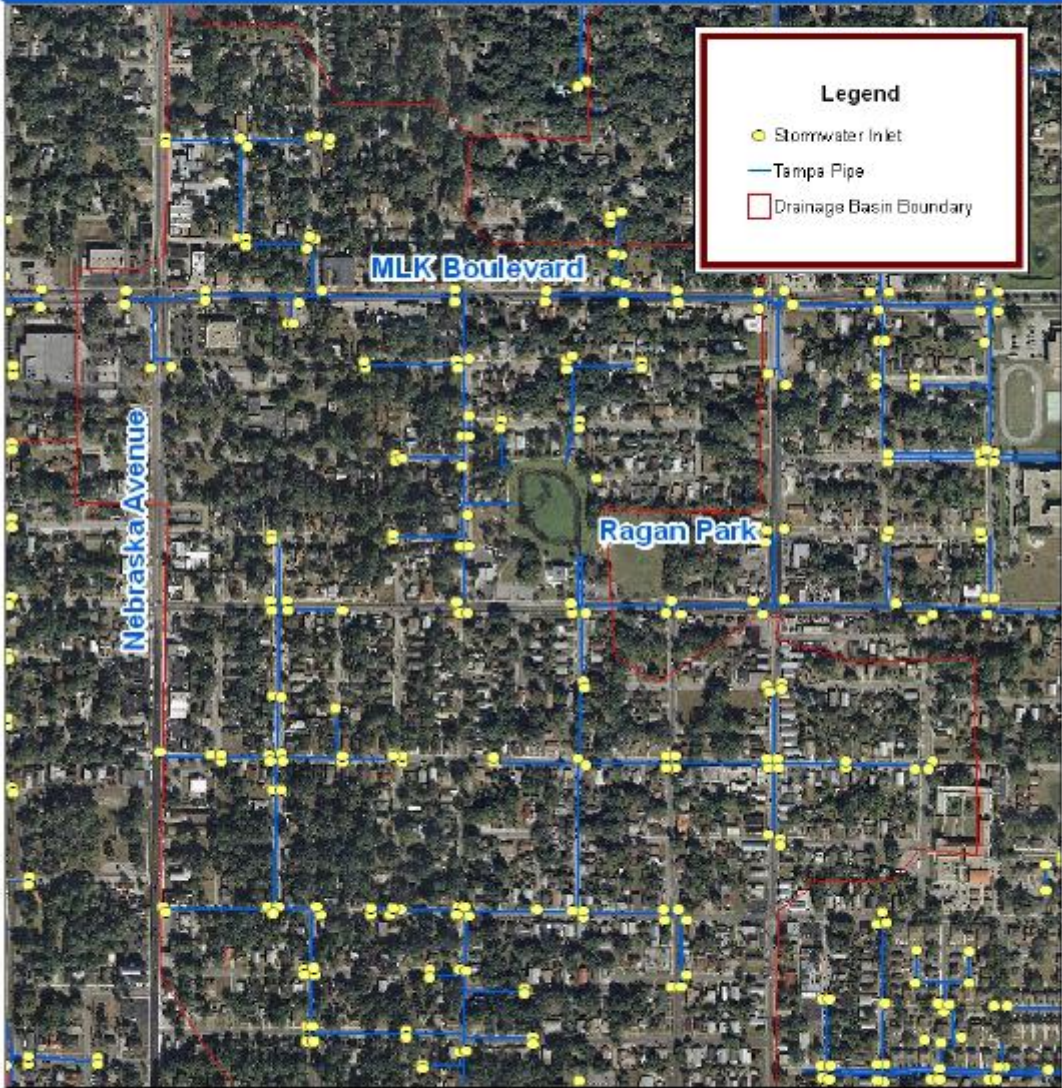
# Ragan Park

## Improvement Suggestions

- \* Clean Pond More Than 3 – 4 Times A Year (monthly)
- \* Add More Lighting
- \* More Gazebos/Fix Current Gazebo's Electrical Outlets
- \* Fix The Walking Path Around the Pond
- \* More Water Fountains
- \* Assessable Lavatories
- \* **BASKETBALL COURT**



# Ragan Park Drainage Basin September 2010



0 150 300 450 600  
Feet